

6'th "sixth" V4

Indoor Kunstflugmodell

2007 von Christian Keller

Spannweite: 730 mm

Länge: 830 mm

Gewicht: 130-180 g

Equipment Prototyp:

Motor: Schnurzz (SFW)

Regler: YGE-8A (SFW)

Servo: 2x HS50 & 1x Exact 6

Akku: 2x 480 mAh ThunderPower

Abfluggewicht: 142 g

Geschätzter Erbauer,

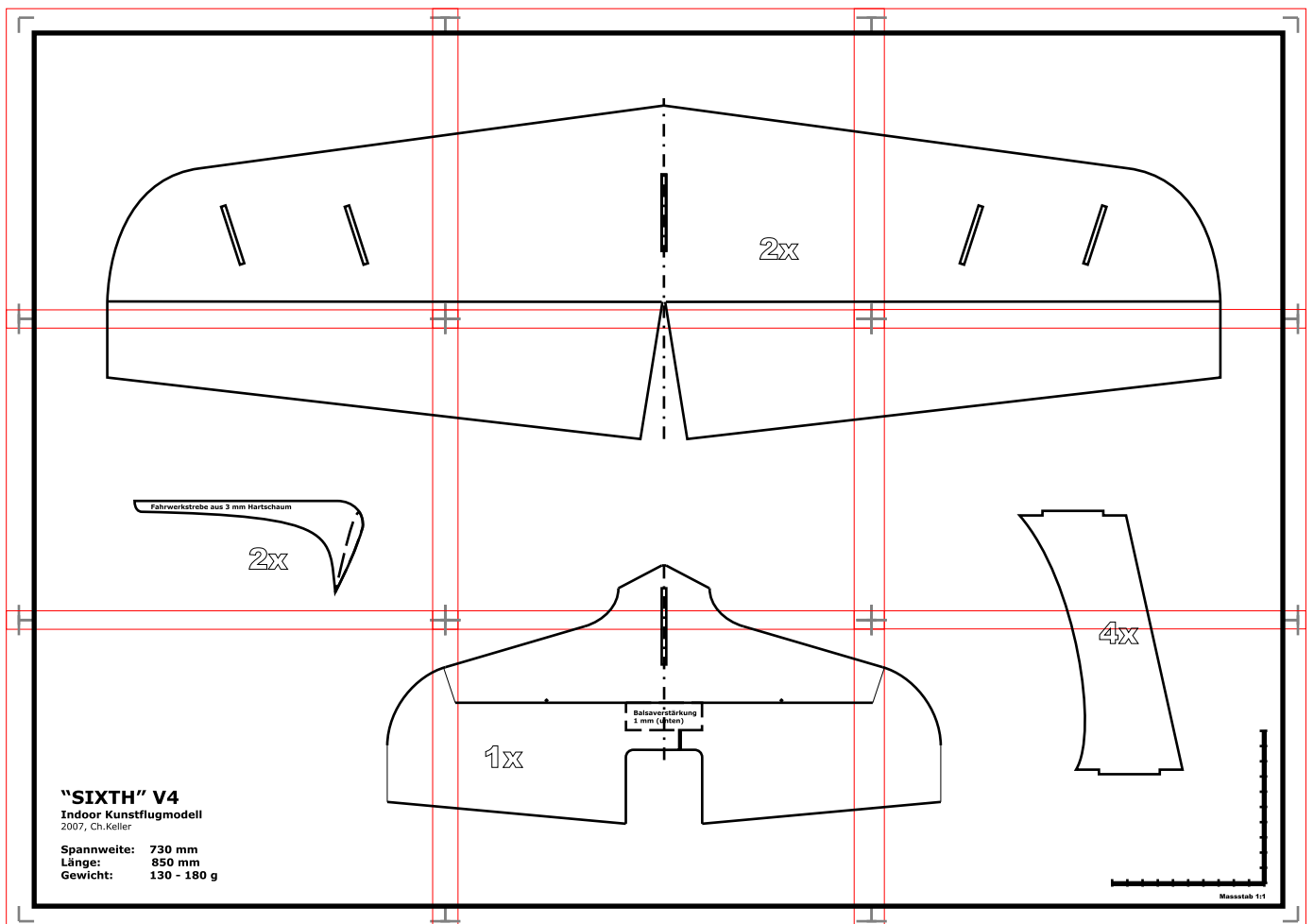
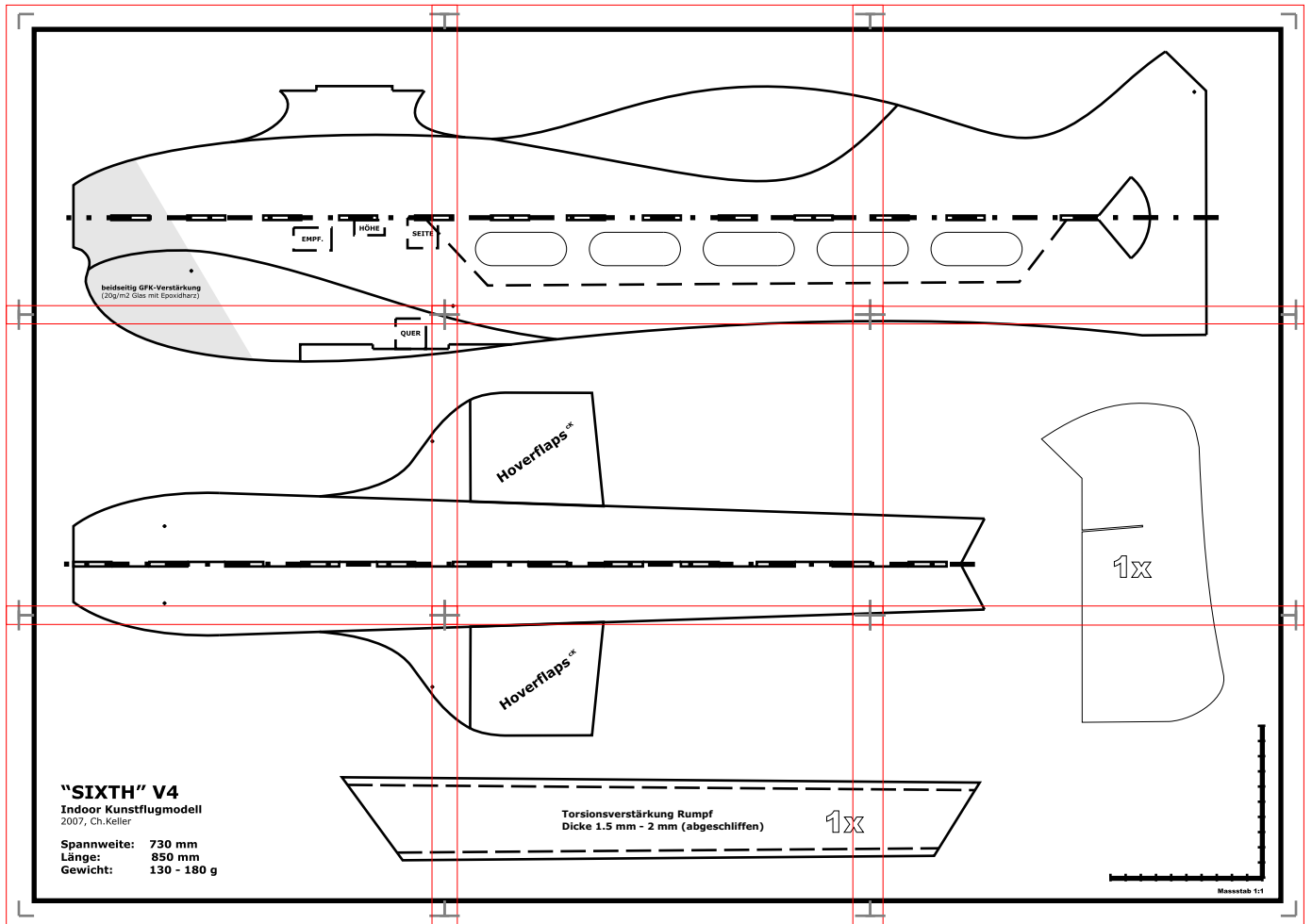
bitte sende ein Bild (oder gleich mehrere ;)) deines "sixth", wenn möglich mit Angaben zum eingesetzten Equipment, an die folgende E-Mail Adresse:

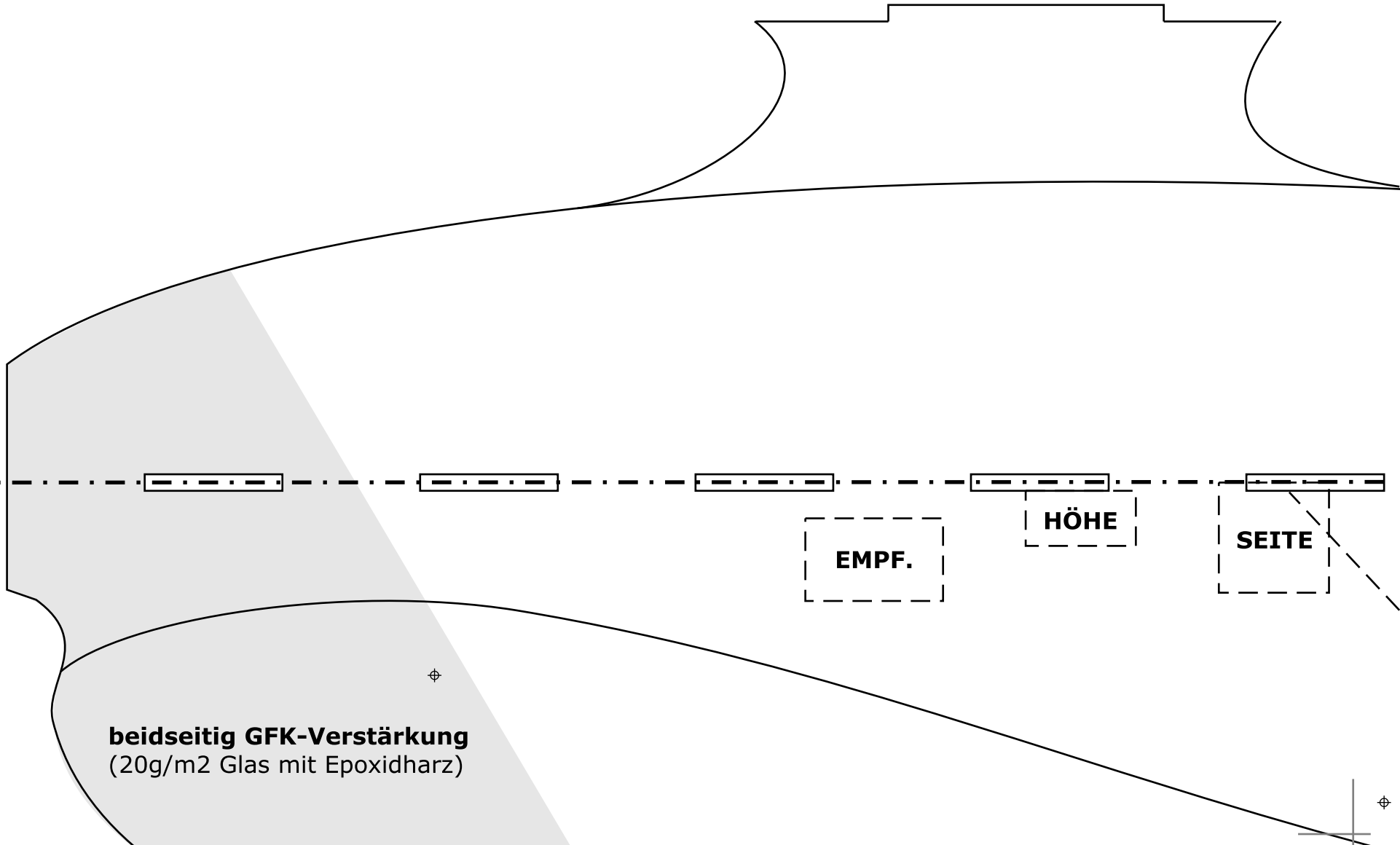
ck-models@hotmail.com

Ich plane eine Homepage auf der sämtliche Baupläne meiner Flieger zum kostenlosen Download verfügbar sein werden. Falls du nicht möchtest, dass dein Flieger in der Galerie erscheint, vermerke dies bitte in deiner E-Mail! Viel Spass mit deinem 6'th!

November 2007, Christian Keller, Schweiz







beidseitig GFK-Verstärkung
(20g/m² Glas mit Epoxidharz)

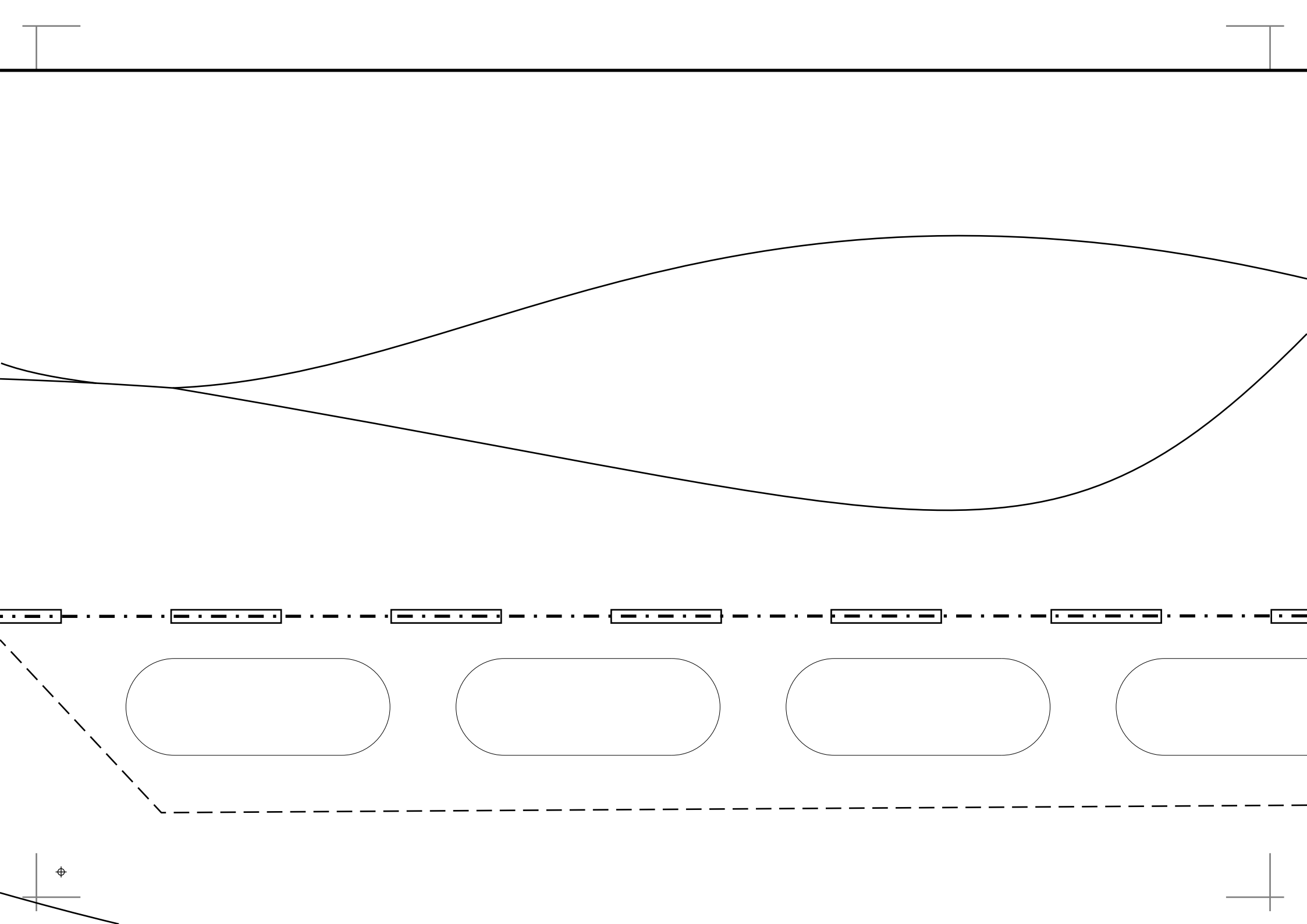
EMPF.

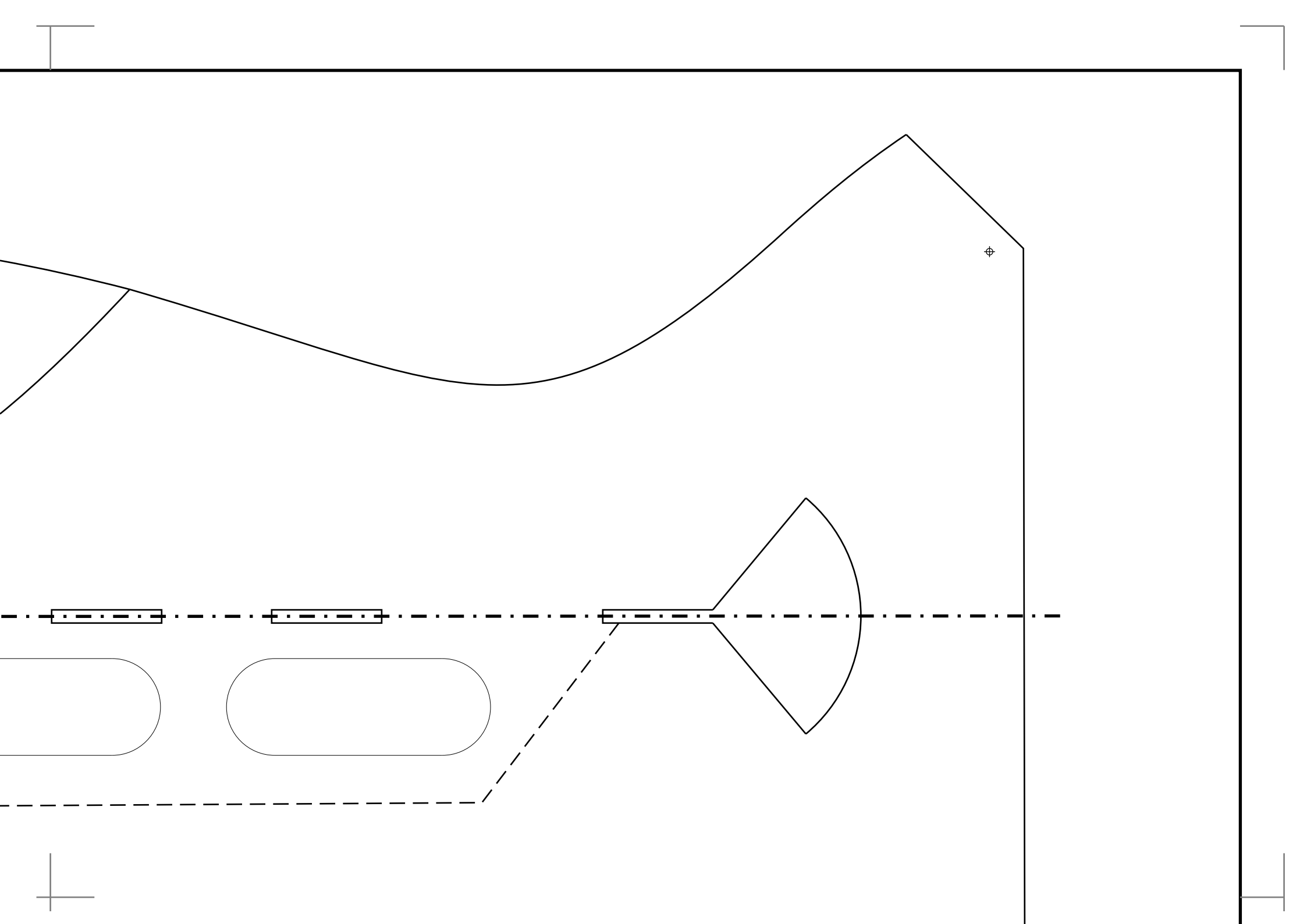
HÖHE

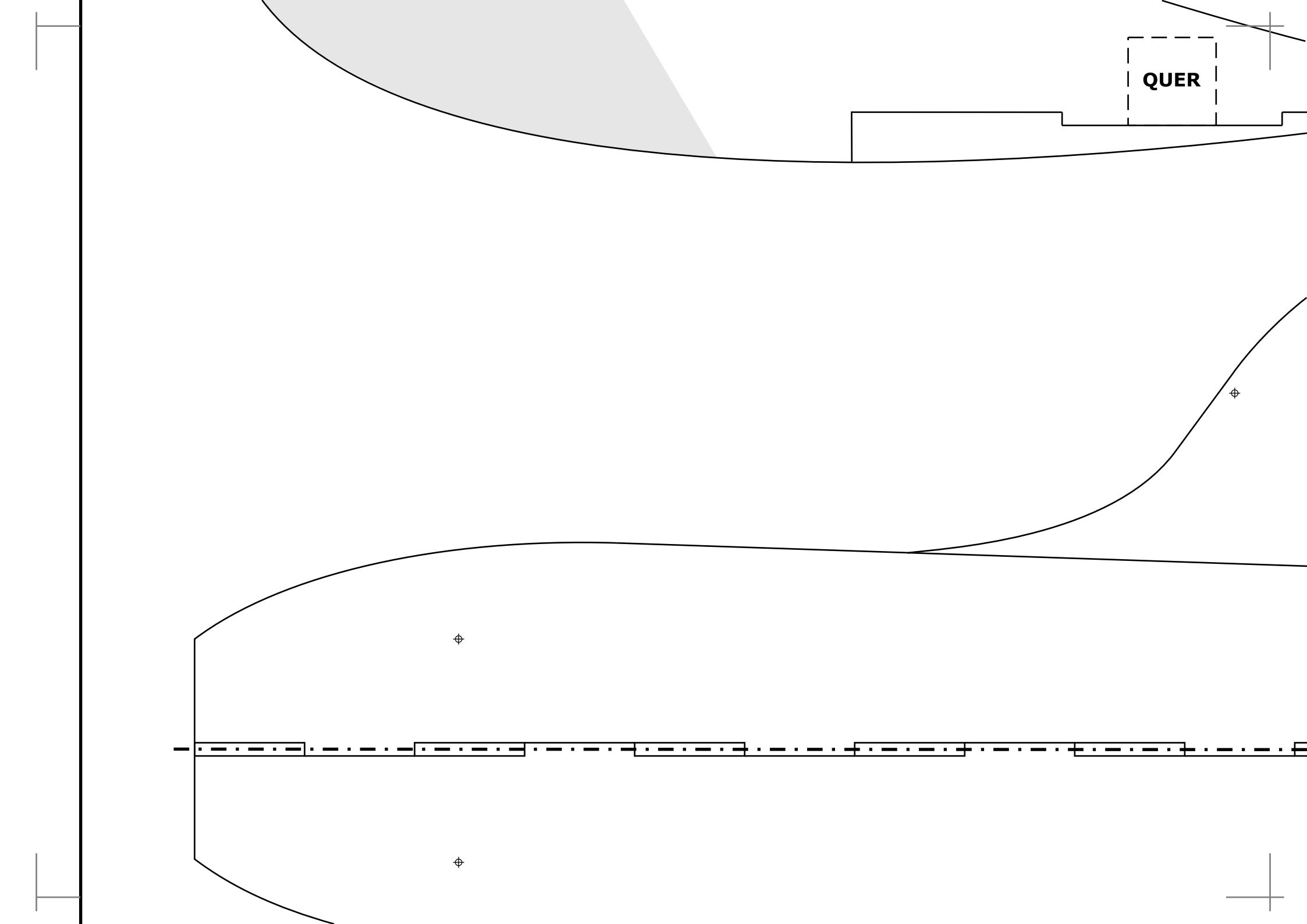
SEITE

⊕

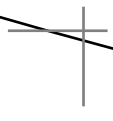
⊕





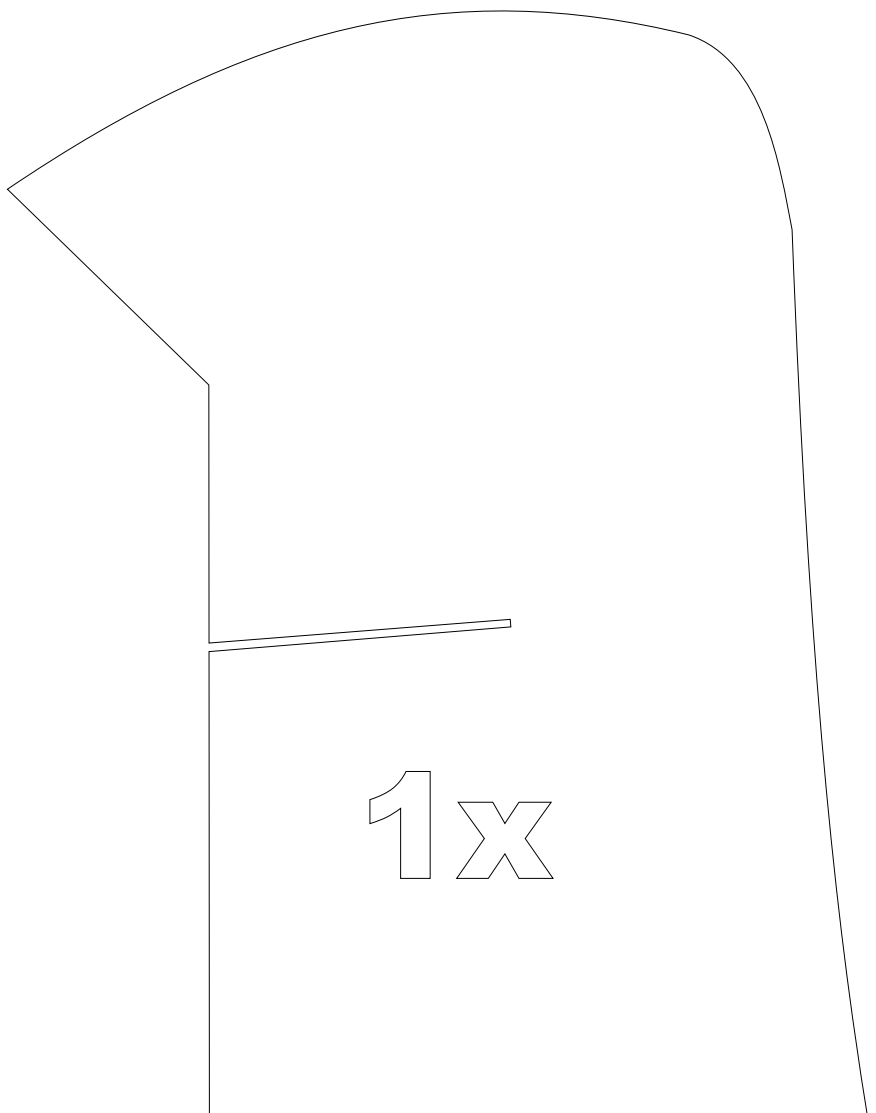
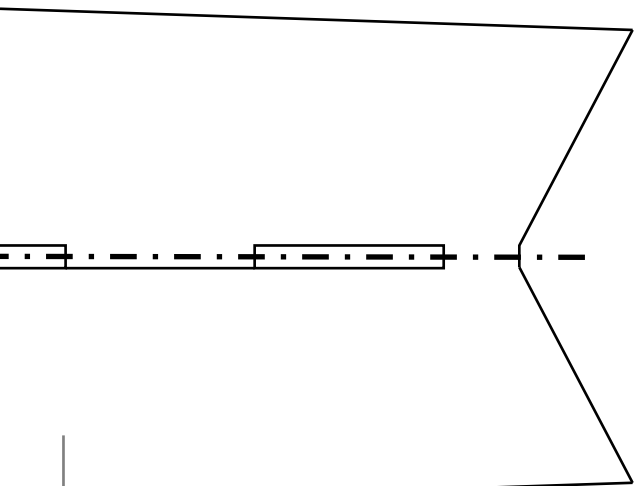
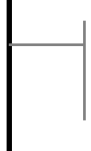
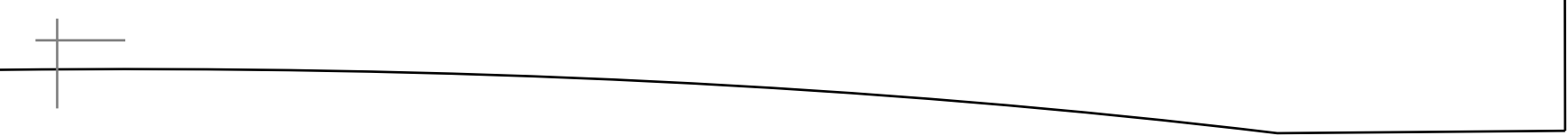


QUER



The image shows a technical drawing of a component labeled "Hoverflaps^{CK}". The component is a trapezoidal shape with a curved top-left corner. A vertical line is drawn from the top-left corner down to the bottom edge. Below the component is a horizontal dashed line consisting of several rectangular segments. The drawing is framed by a top and bottom line that are slightly curved, and there are crosshair marks at the corners.

Hoverflaps^{CK}



"SIXTH" V4

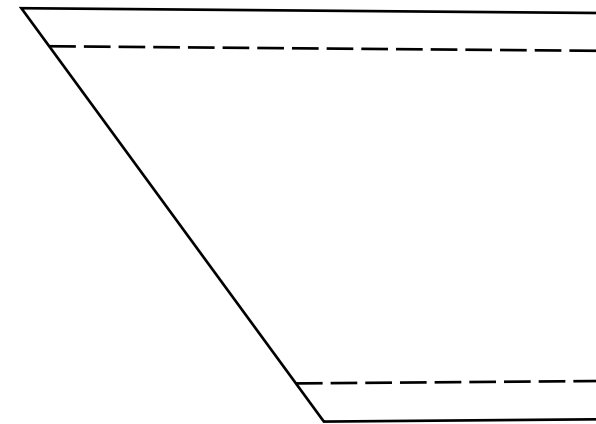
Indoor Kunstflugmodell

2007, Ch.Keller

Spannweite: 730 mm

Länge: 850 mm

Gewicht: 130 - 180 g



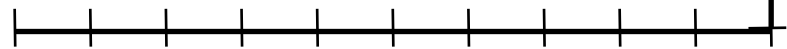
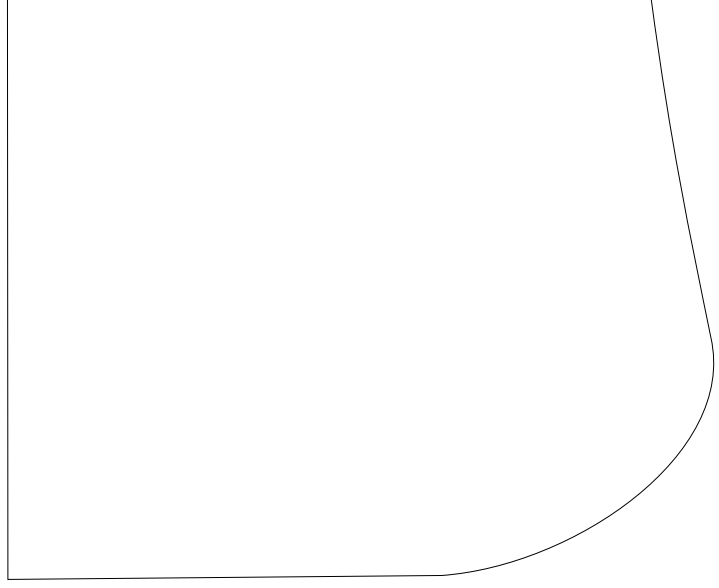
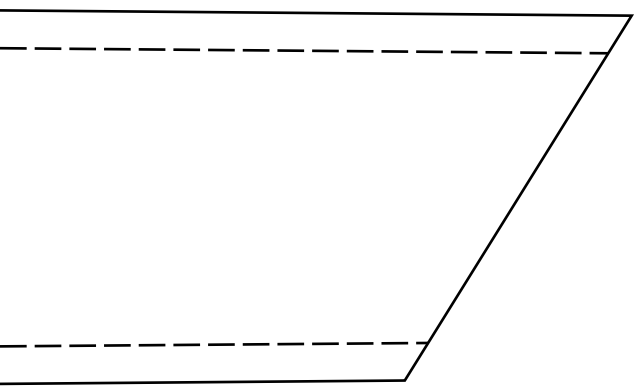
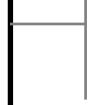


Technical drawing of a Hoverflaps component. The drawing shows a curved, trapezoidal shape with a vertical line on the left side. The text "Hoverflaps^{ck}" is written diagonally across the shape. There are crosshair marks at the top left and top right corners of the drawing area.

Hoverflaps^{ck}

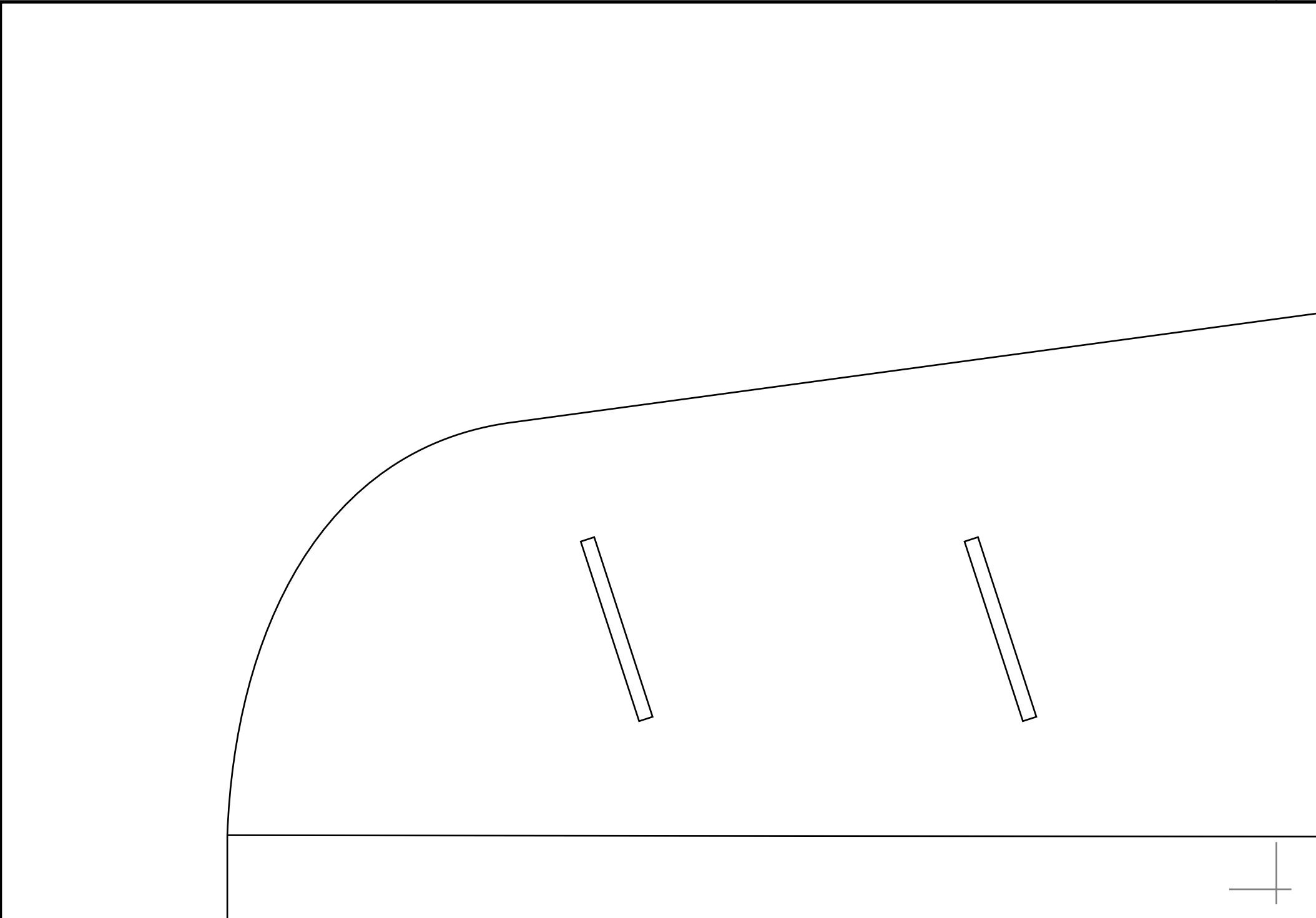
Torsionsverstärkung Rumpf
Dicke 1.5 mm - 2 mm (abgeschliffen)

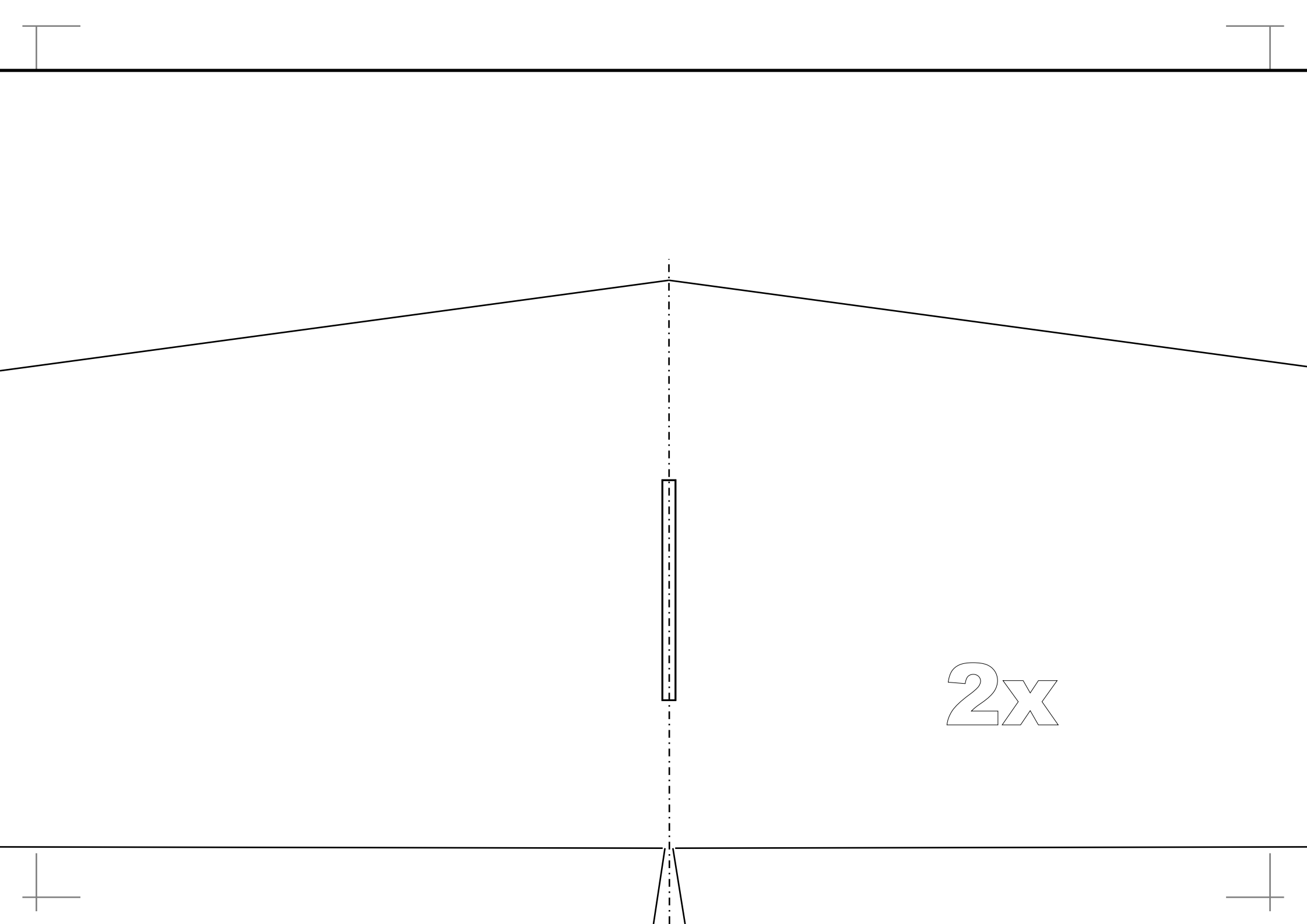
1x

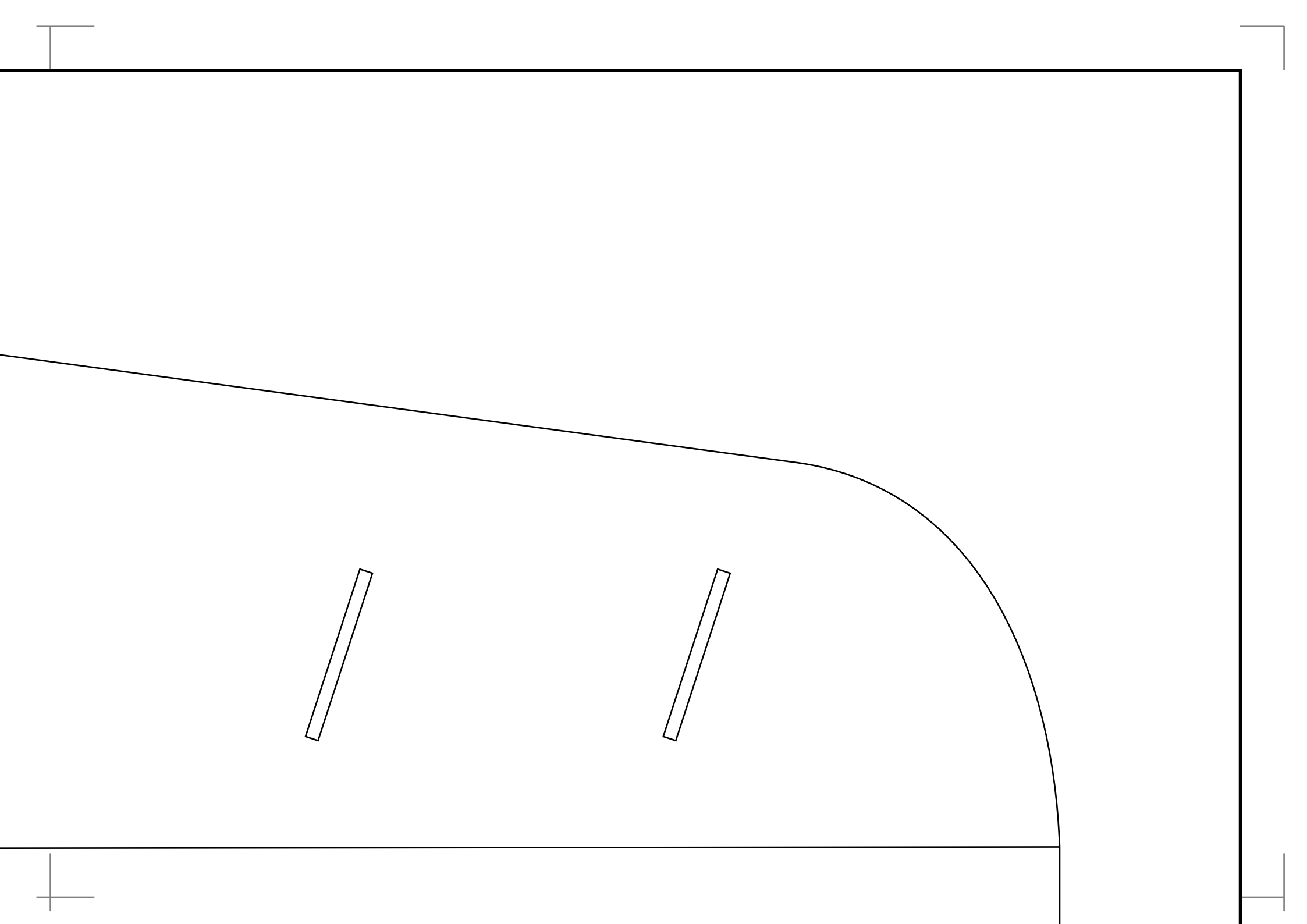


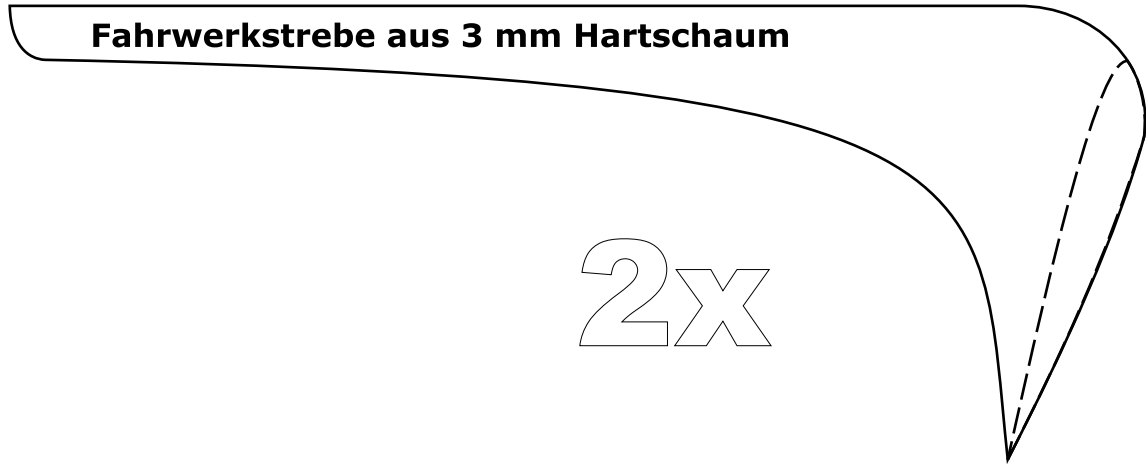
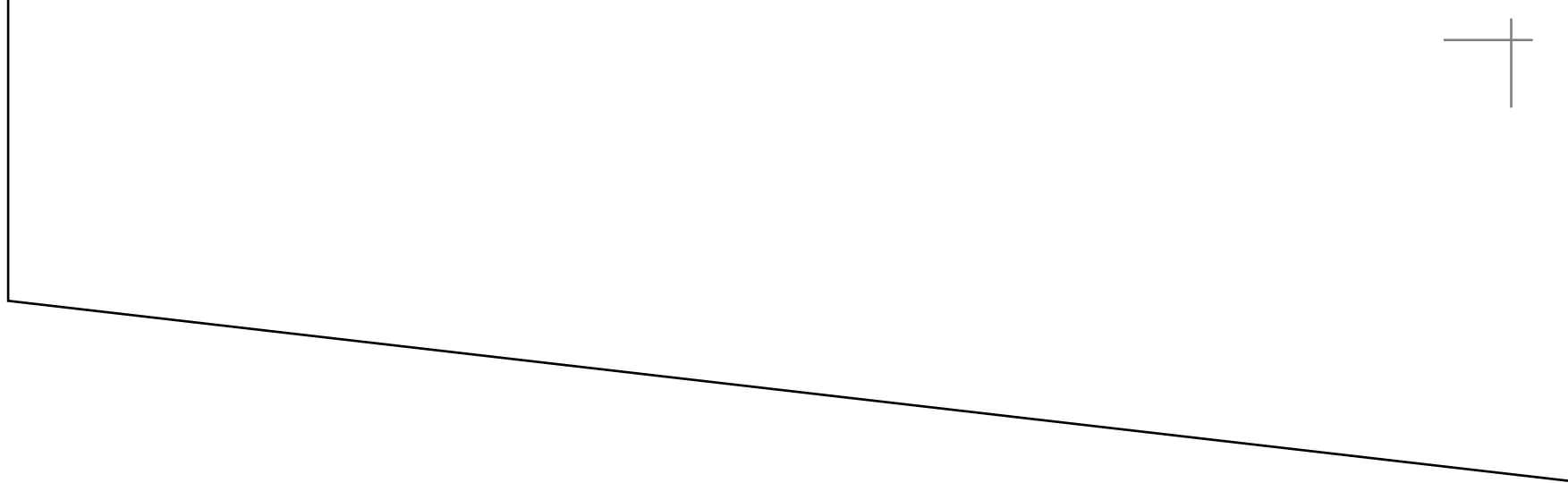
Massstab 1:1





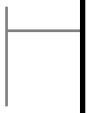


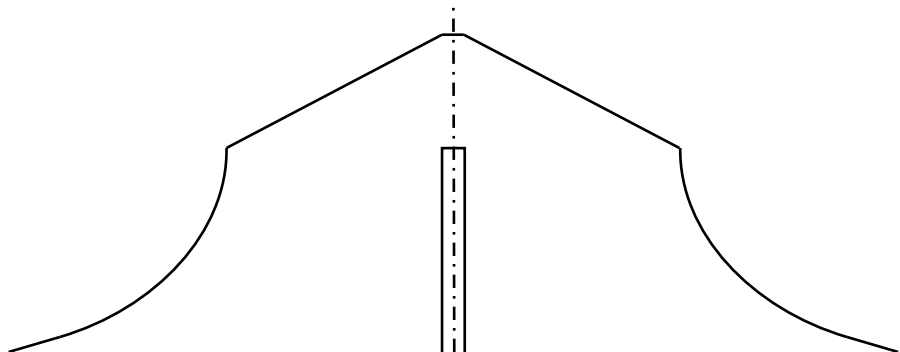
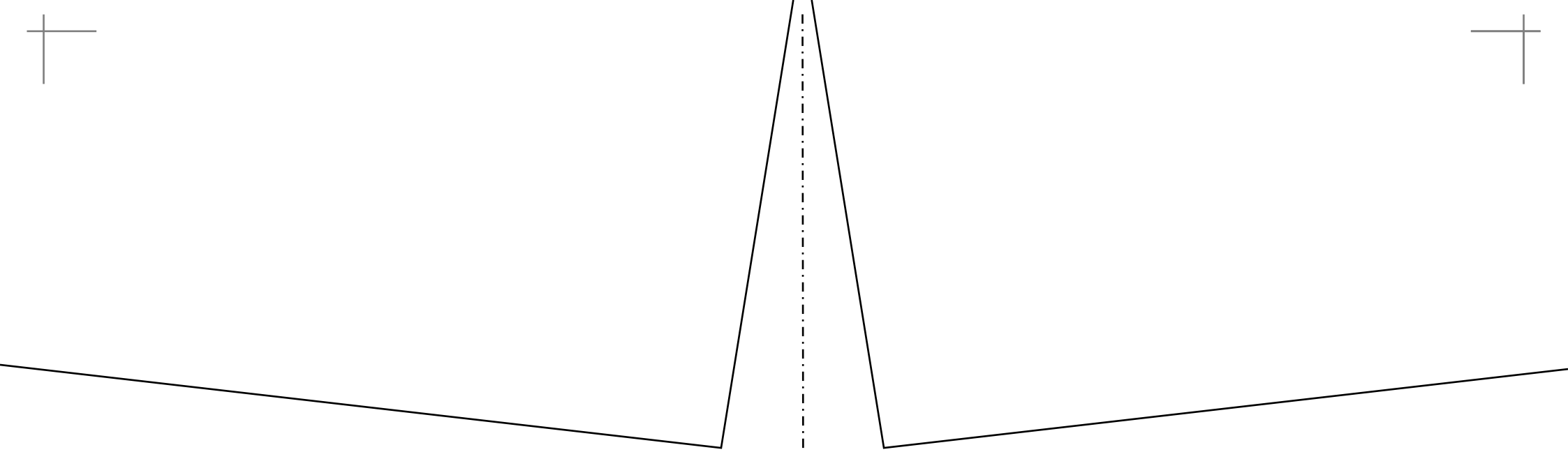


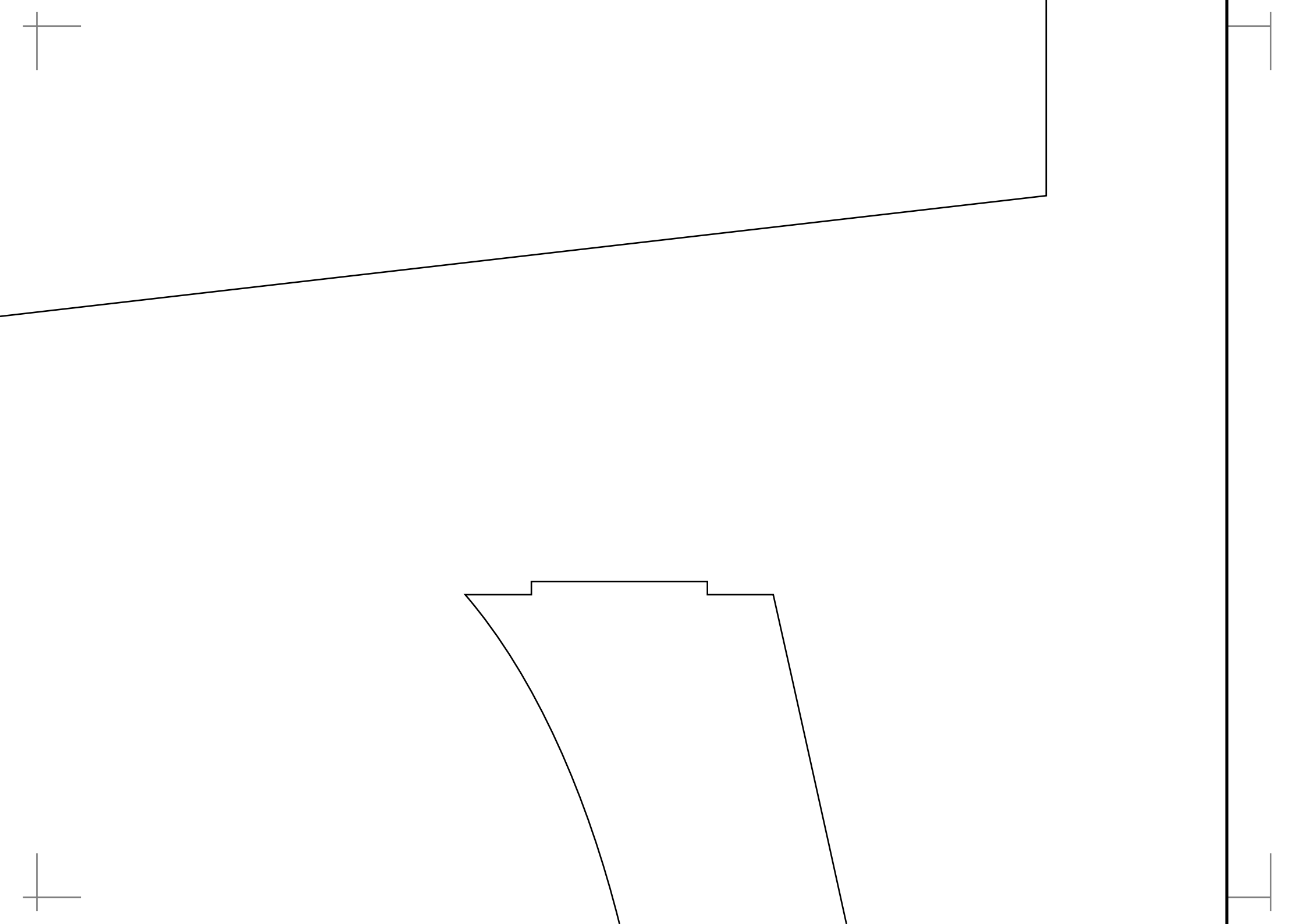


Fahrwerkstrebe aus 3 mm Hartschaum

2x







"SIXTH" V4

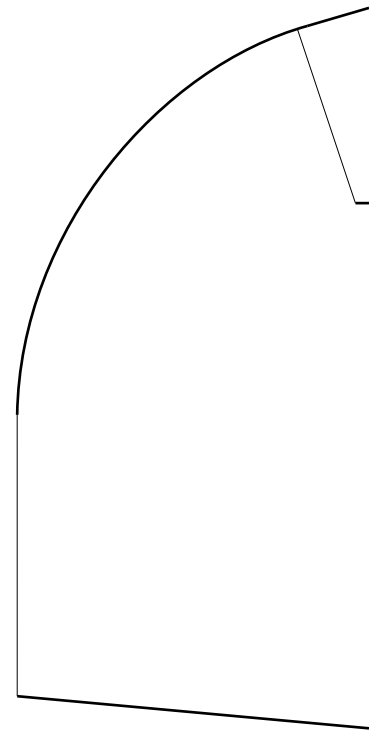
Indoor Kunstflugmodell

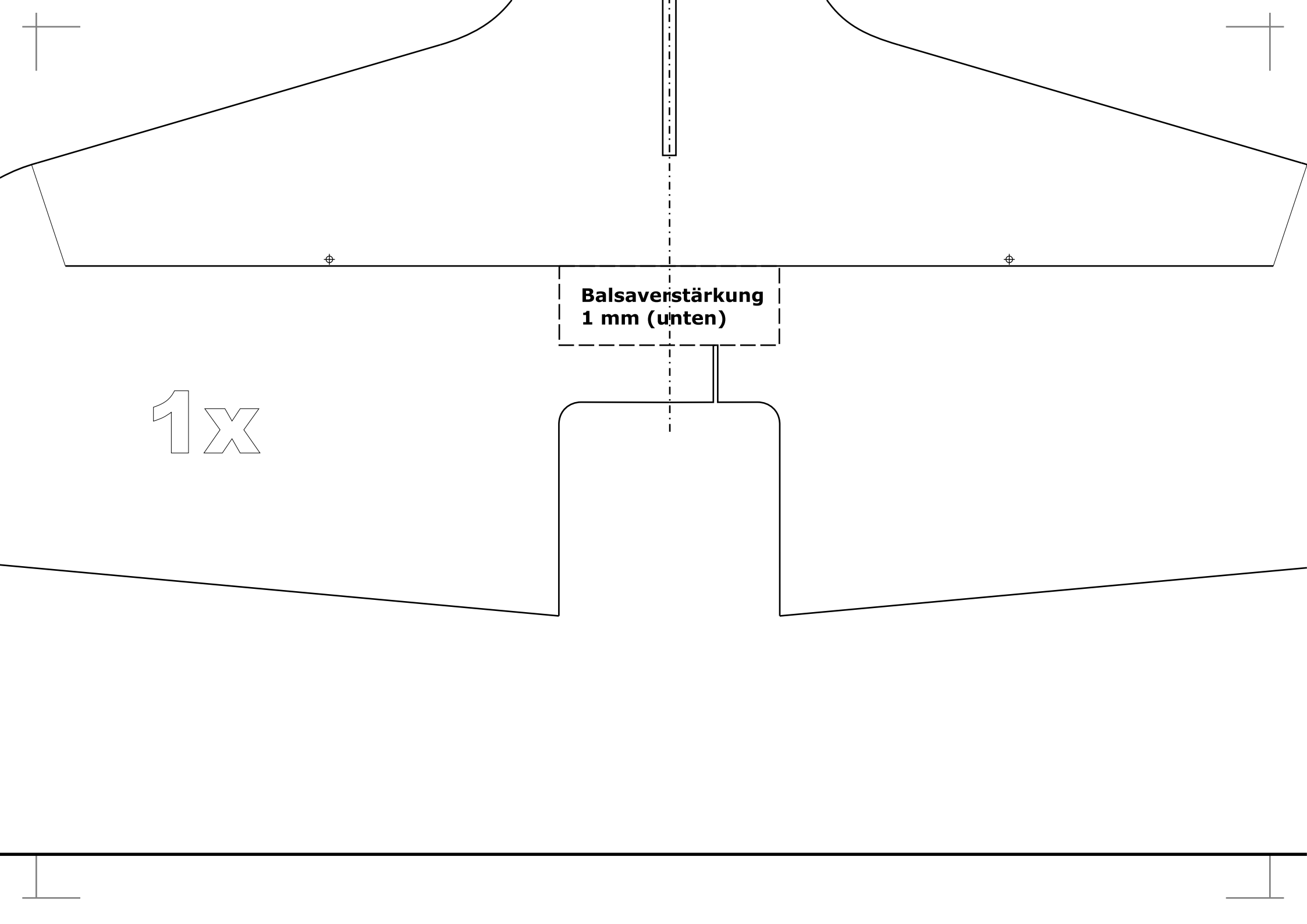
2007, Ch.Keller

Spannweite: 730 mm

Länge: 850 mm

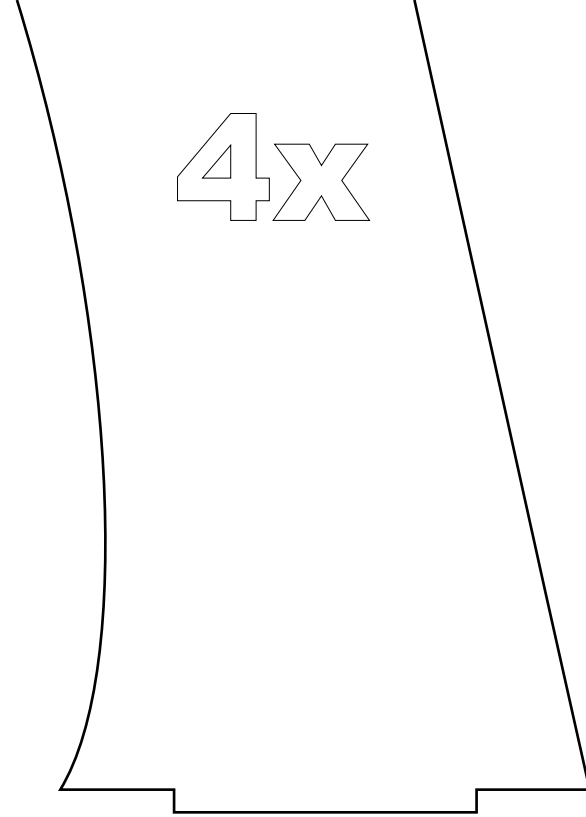
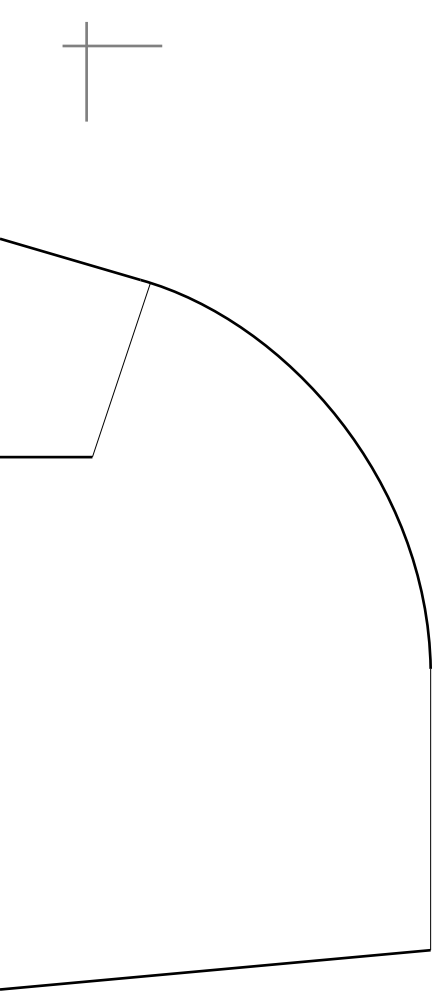
Gewicht: 130 - 180 g



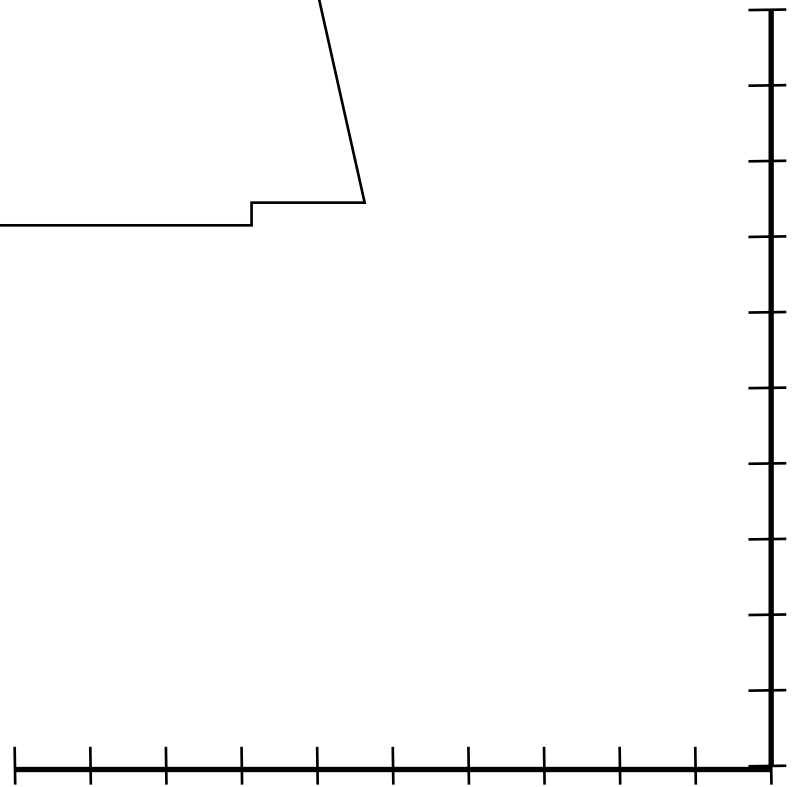


**Balsaverstärkung
1 mm (unten)**

1x



4x

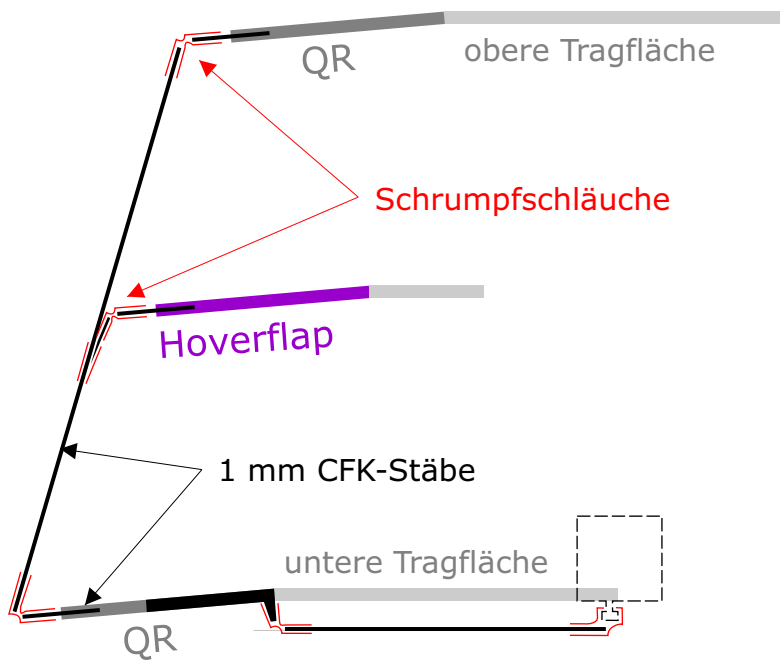


Massstab 1:1



Bautipps

Anlenkung der Hoverflaps

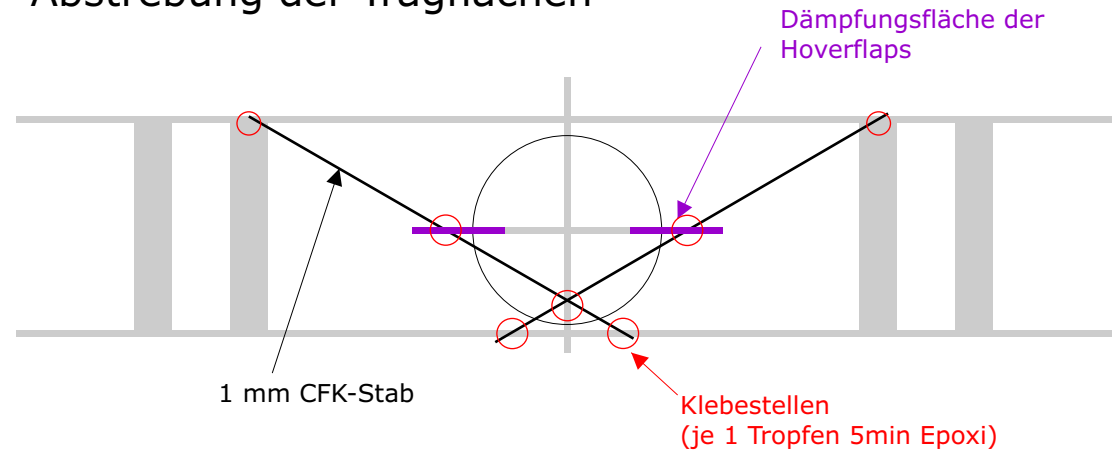


CG
Schwerpunkt



ca. 25 mm (+- 10 mm)
hinter der Flügelvorderkante
des unteren Flügels

Abstrebung der Tragflächen



Verstrebung Leitwerksflächen

